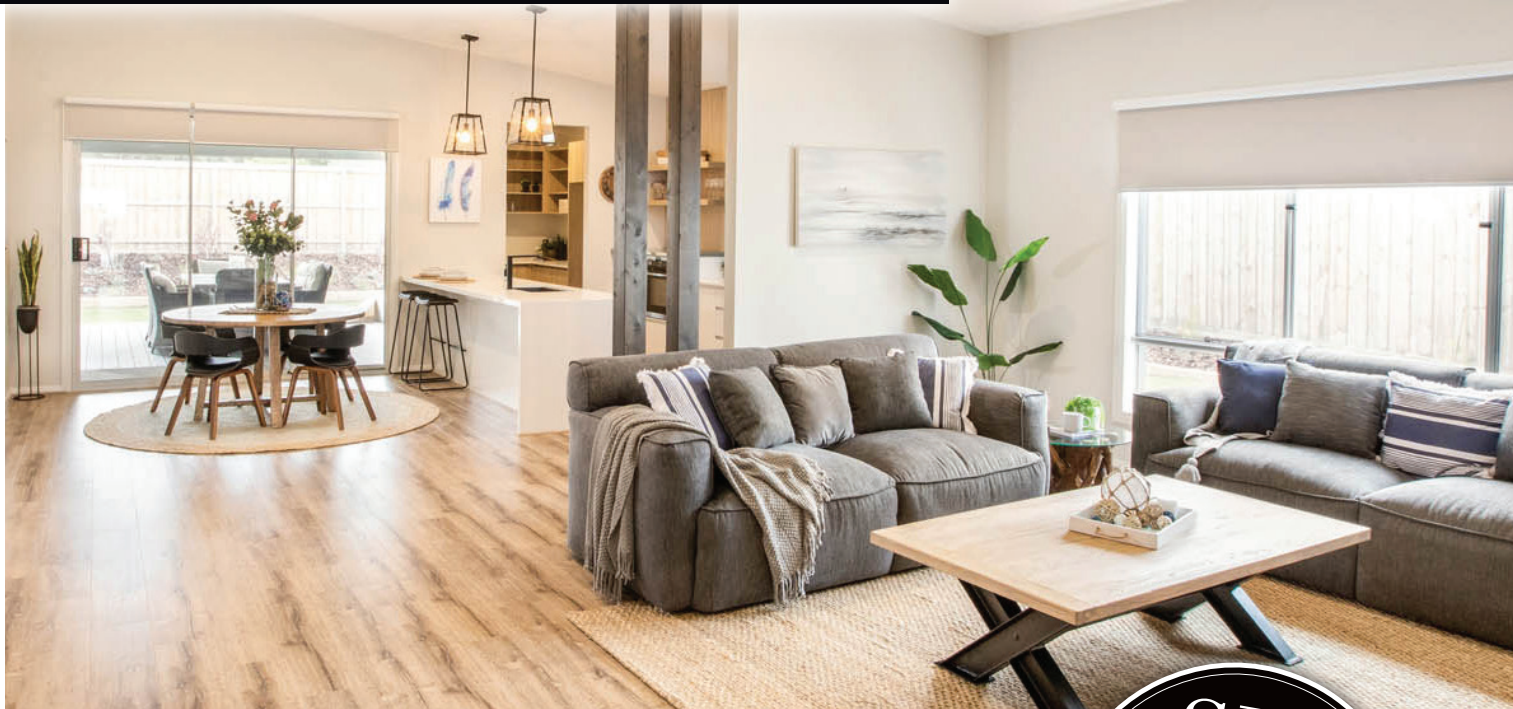


# The Williamson 276 | 16m+ Frontage



## RELAX & UNWIND

The Williamson delivers on family living by providing three separate zones for everyone to relax and unwind. There is a front formal lounge, a kid's playroom, and then a large family area where everyone can come together. The home also boasts a generous master suite with plenty of wardrobe space, a large shower and twin vanities. And if you love to cook, you're covered here also with plenty of bench space and an upsized walk in pantry.



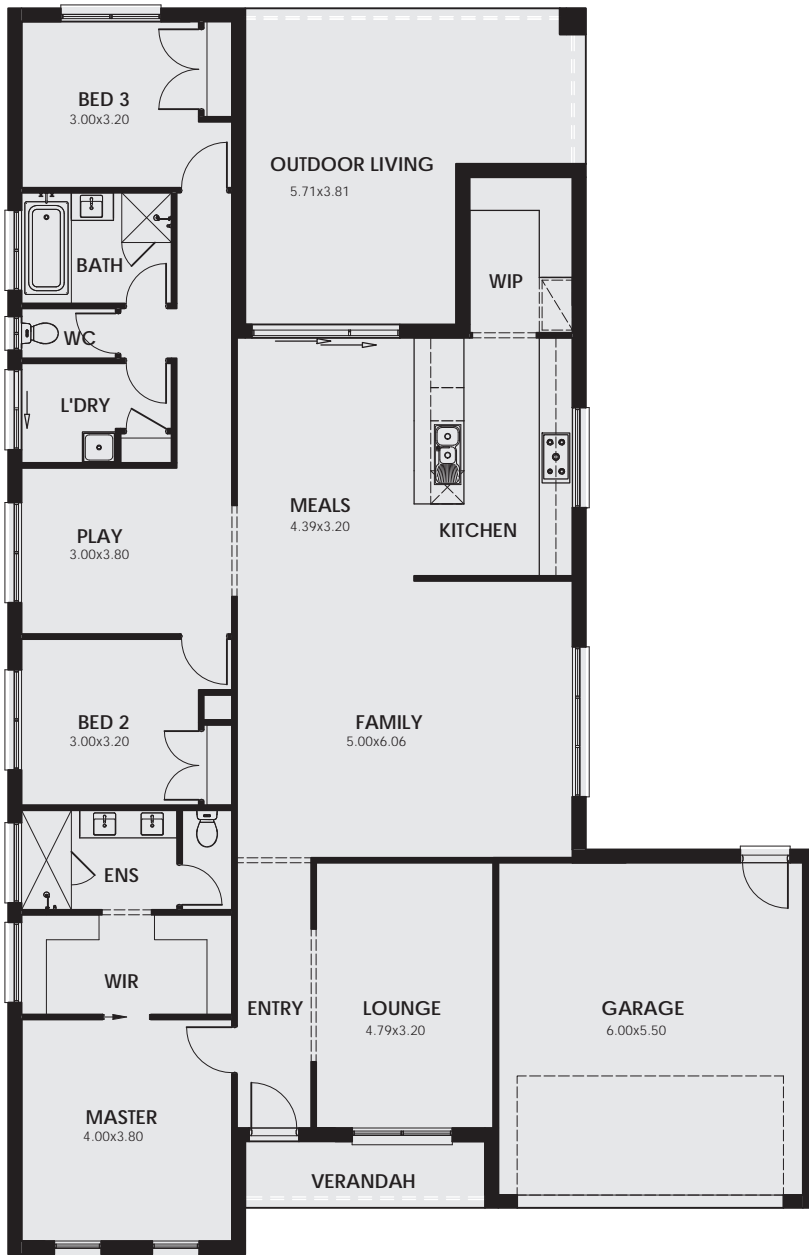
ON DISPLAY AT PARKLANDS COASTAL

## Contact us:

Call: 9095 8000 or visit [www.sjdhomes.com.au](http://www.sjdhomes.com.au)  
for more information & latest display locations.

# SJDhomes

\*Some images are for illustration purposes only and may contain items not included in all SJD products. The prices are based on each house as standard and not as displayed. SJD Homes reserves the right to alter prices or the terms without notice. For more information visit: [www.sjdhomes.com.au](http://www.sjdhomes.com.au)



<b>Total Size:</b>	<b>27.60 Sq</b>	<b>256.42 m<sup>2</sup></b>
Living	20.01 Sq	185.85 m <sup>2</sup>
Garage	3.99 Sq	37.05 m <sup>2</sup>
Outdoor Living	3.05 Sq	28.33 m <sup>2</sup>
Verandah	0.56 Sq	5.20 m <sup>2</sup>

Exterior Width	14.59 m
Exterior Length	22.50 m
Required Lot Width:	16 m
Required Lot Length:	30 m

**Contact us:**

**Call:** 9095 8000 or visit [www.sjdhomes.com.au](http://www.sjdhomes.com.au) for more information & latest display locations.

**SJD**homes

\*Some images are for illustration purposes only and may contain items not included in all SJD products. The prices are based on each house as standard and not as displayed. SJD Homes reserves the right to alter prices or the terms without notice. For more information visit: [www.sjdhomes.com.au](http://www.sjdhomes.com.au)